

# Populating Your Layout Version 2.0

## Marty Vaughn MMR

---

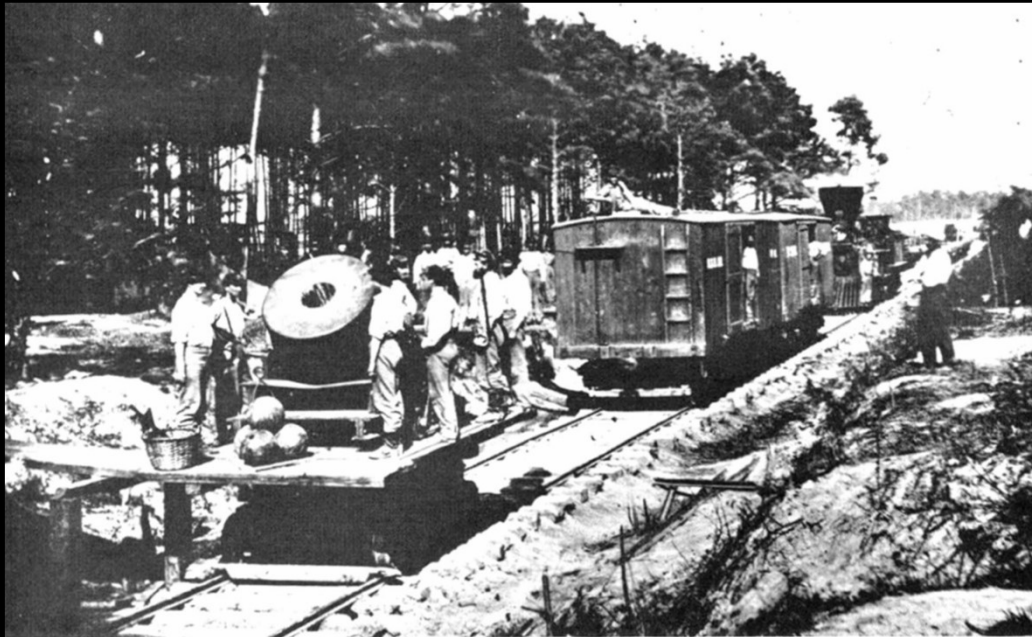
- Too Much Dynamite!



# Populating Your Layout Version 2.0

---

- How about the NMRA Prototype AP?



*Figure 244.* The mortar Dictator or Petersburg Express at the siege of Petersburg.



# The Masters: John Allen and Jack Work

---



# Populating Your Layout Version 2.0

---

- How to make a Preiser Figure...
- 1<sup>st</sup> buy a band saw..



# Hand Made Preiser Figures

---



# Minute Men and the NMRA

---

- Thank you, Nat Howard!



# Populating Your Layout Version 2.0

---

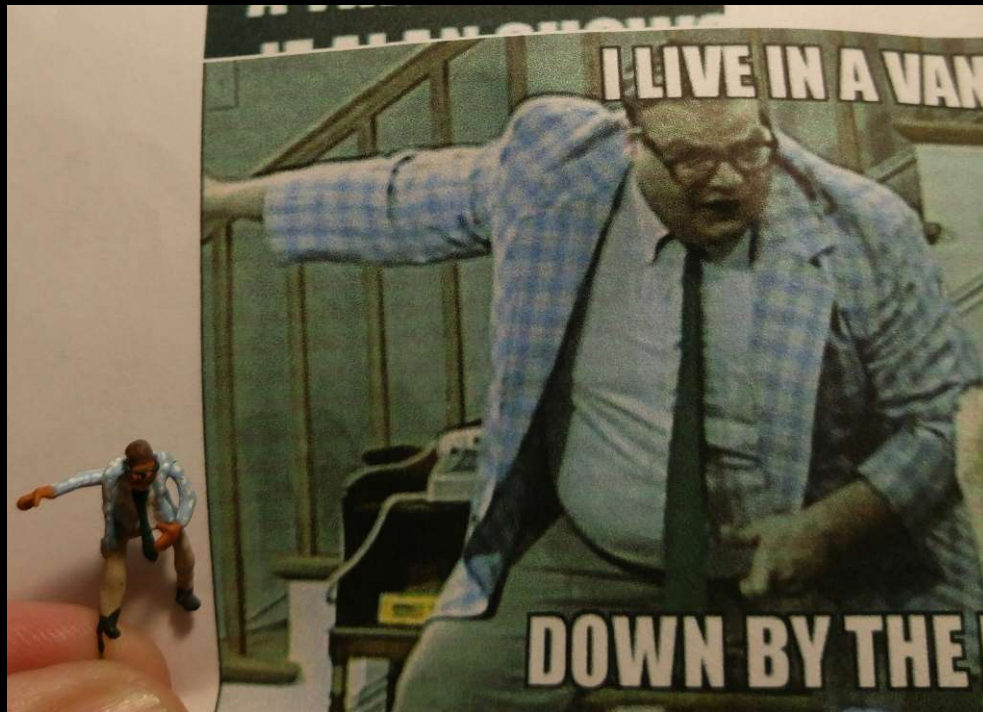
- This is a clinic for the entire “family”



# Populating Your Layout Version 2.0

---

- Or some special Matt Foley figure?

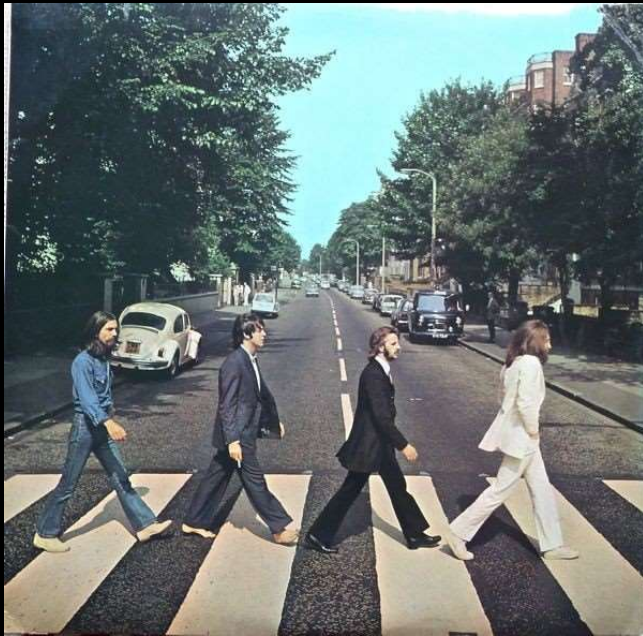




# Populating Your Layout Version 2.0

---

- Have a special scene to recreate?



# Populating Your Layout Version 2.0

---

- Want to add interiors to your structures?



# Populating Your Layout Version 2.0

---

- Making your own figures will
  - Save you money (a retiree mandate!)
  - Allow you to make the figures fit the scene, rather than having to make the scene fit the figures.



# Memphis and Charleston O Scale



# Sutler's Row Memphis TN



# Populating Your Layout Version 2.0

---

- In any Scale!



# Populating Your Layout Version 2.0

## ■ Materials Required



- Crafter's Pick THE ULTIMATE glue
  - (Hobby Lobby)
- Steel Wire (30 or 32 gauge for N, HO
  - and S 24 or larger for O)



# Populating Your Layout Version 2.0

---

## ■ Tools

- Needle Nose Pliers
- Flush cutting wire cutters
- Scale Ruler
- Toothpicks
- Paper towels
- Paper Punch





# Populating Your Layout Version 2.0

---

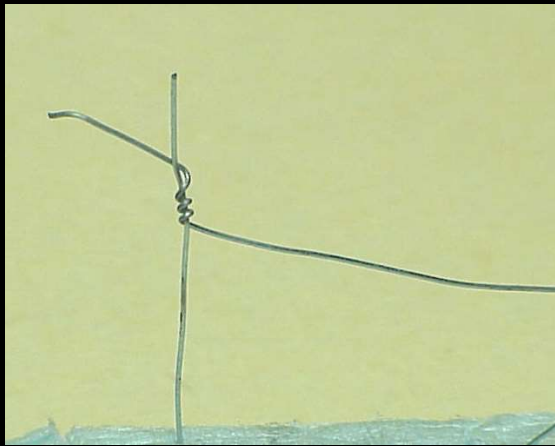
- **Optional Tools**  
When you get fired up!



# Populating Your Layout Version 2.0

---

## ■ The Armature



# Populating Your Layout Version 2.0

---

- The Armatures
- HO, O form a loop
  - For hand and thumb
- N just needs a blob
- Leave a “handle” at
  - One leg



# Populating Your Layout Version 2.0

---

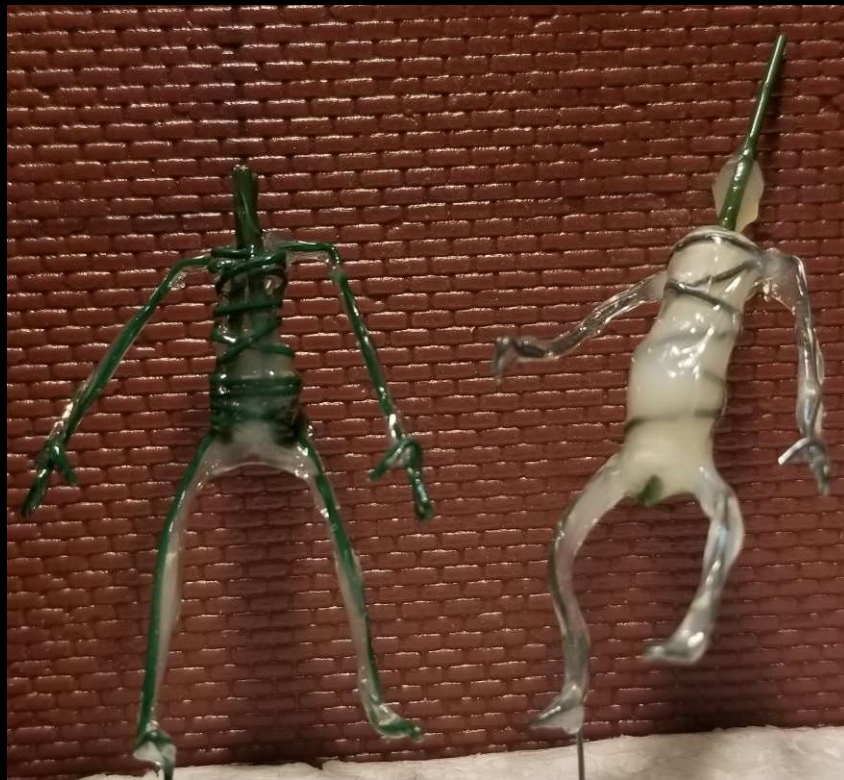


# Base Coat for Flexible Figures



# O and G Require Two Coats

---



# Populating Your Layout Version 2.0

---

- The Armature. Decide on the basic position.
- Add a dab of matt gel on a toothpick and start shaping the body.



# Gloss Gel Can be used to make Water on your layout!

---





# Populating Your Layout

---

- The Armature. Let it dry add details with the glue and paint it
- Hat brims and bills are from paper punch. Losing Power Ball Tickets work well... Coats are velum paper.



# Populating Your Layout Version 2.0

---

- Do you have broken figure missing an arm or leg?



# Populating Your Layout Version 2.0

---

- Then you need a “Dolly Llama” ...



# Populating Your Layout Version 2.0

---

- Add crews to your rolling stock-



# Populating Your Layout Version 2.0

- You can form the figure and hands to hold tools



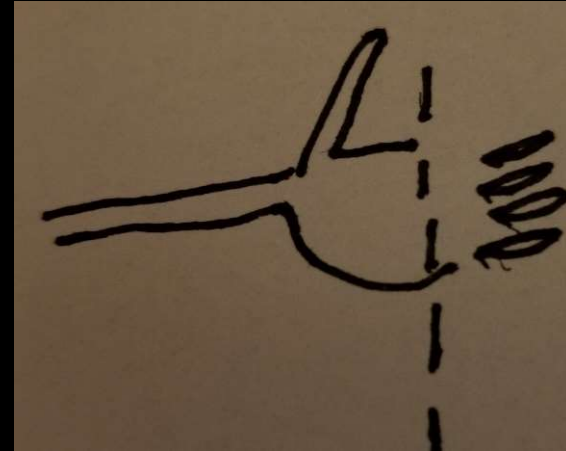
# Populating Your Layout Version 2.0

---

- In most scales:

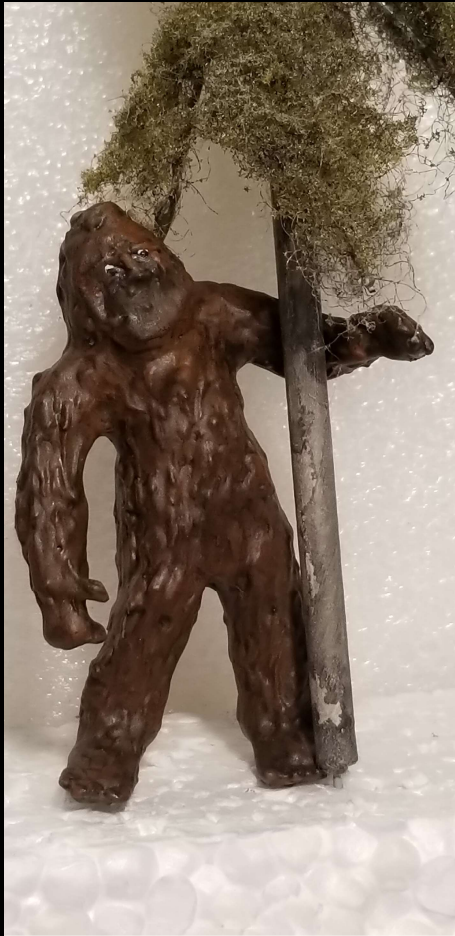


# But When You Really Need a Finger...



# Animals are also possible

---





# Populating Your Layout Version 2.0

---

- With a micro bulb or micro-LED working lanterns



# Populating Your Layout Version 2.0 - Questions?



# Populating Your Layout

---

- And this of course is....the end.



- [wmvaughn@mchsi.com](mailto:wmvaughn@mchsi.com)

---

# Figure Modifying and Painting

---

---

# Populating Your Layout Version 2.0

---

- Materials Required



# Populating Your Layout Version 2.0

- The Glues
- These



Not this one





# Populating Your Layout

---

## ■ Tools

- Needle Nose Pliers
- Flush cutting wire cutters
- Scale Ruler
- Toothpicks
- Paper towels



# Populating Your Layout Version 2.0

---

- Need to fit a driver or engineer?



# Populating Your Layout Version 2.0

---

- Or make what they are holding. Just glue and wire and paint.



# Populating Your Layout Version 2.0

---



---

# Other Blanks from Commercial Sources

